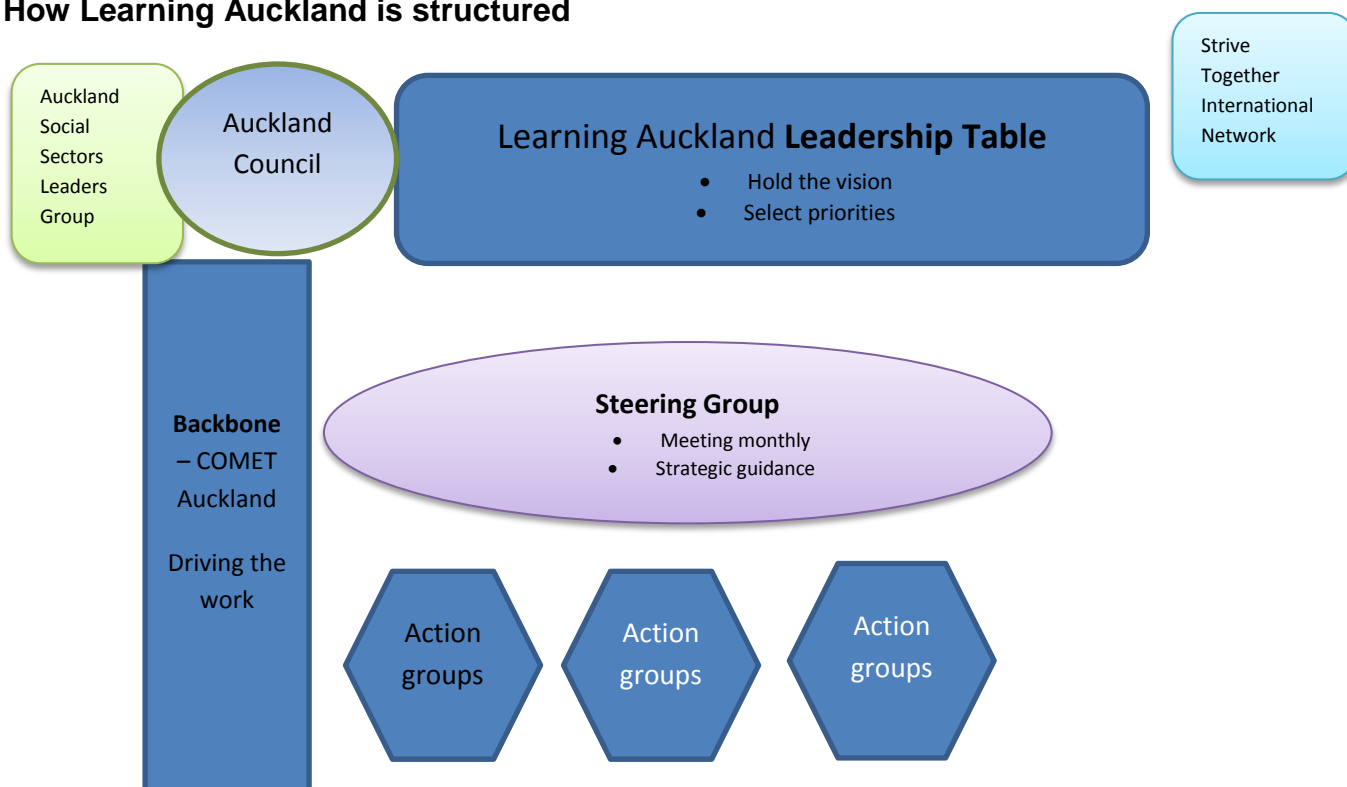


How Learning Auckland is structured



<p>Overview of Learning Auckland</p>	<p>Learning Auckland is an emerging city-wide collaboration, uniting around a common vision: to improve the effectiveness of Auckland’s ‘cradle to career’ education and skills system.</p> <p>There are pockets of excellence within our education system and many children and families are successful. However, too many children and young people are still disengaging from education and many families do not know how to successfully support their children’s learning. Many initiatives are not joined up or not to a scale sufficient to make an impact on achievement in Auckland.</p> <p>The individual achievements of our 1,200 early learning centres, 540 schools, and hundreds of tertiary and adult learning organisations are insufficient in themselves to make the difference. Nor are the Better Public Service Targets, National Standards and other nationally mandated initiatives sufficient to connect across the city and with the hundreds of diverse communities in Auckland.</p> <p>Learning Auckland is a community initiative led by and for Auckland.</p>
<p>Role of Steering Group</p>	<p>The Steering Group works alongside COMET Auckland to drive the work of the Learning Auckland partnership. It is smaller than the Leadership Table but may contain some Leadership Table members. It:</p> <ul style="list-style-type: none"> - meets monthly to guide the work programme - brings forward recommendations for review and feedback - representative(s) will attend the Leadership Table
<p>Role of Working Groups</p>	<p>The Leadership Table will determine one or two major areas for focused action, at any one time (guided by the data, and depending on resources)</p> <p>Working Groups will be created from different sectors. Members of the Leadership Table are encouraged to participate in relevant working groups</p>
<p>Role of COMET Auckland</p>	<p>COMET Auckland (an independent education Trust and CCO of Auckland Council) is sponsoring Learning Auckland by committing staff time and resources to the Learning Auckland backbone function.</p>