

LEARNING AUCKLAND

Ako Tāmaki Makaurau

Working together for learning for Auckland

Susan Warren & Alison Sutton
COMET Auckland

COLLECTIVE IMPACT Auckland,
October 2014



What is COMET Auckland?

- Auckland's education CCO
- Charitable Trust
- Education and skills across ages, sectors and the city
- Innovation, sector leadership, advocacy, coordination
- Backbone for Learning Auckland

Auckland's education challenges

94% ECE participation c/f
87% Pasifika

24% (4,120) Yr 8
students below reading
standard moving into
high school

15% households with
children, no internet

28,000
NEETs –
12.3%

22%
unemployment
for 15-24 year
olds

Early literacy

14% toddlers read to weekly or less

Low SES kids have fewer words starting
school (3,000 /c-f 6,000 words middle SES

2,500 leave school with
no qualifications

25% children in
poverty

18 year olds with
NCEA 2

- **89%** overall
- **66%** Maori

410,000
adults with
low literacy

25,000 adults
need intensive
ESOL



Cradle to career & beyond

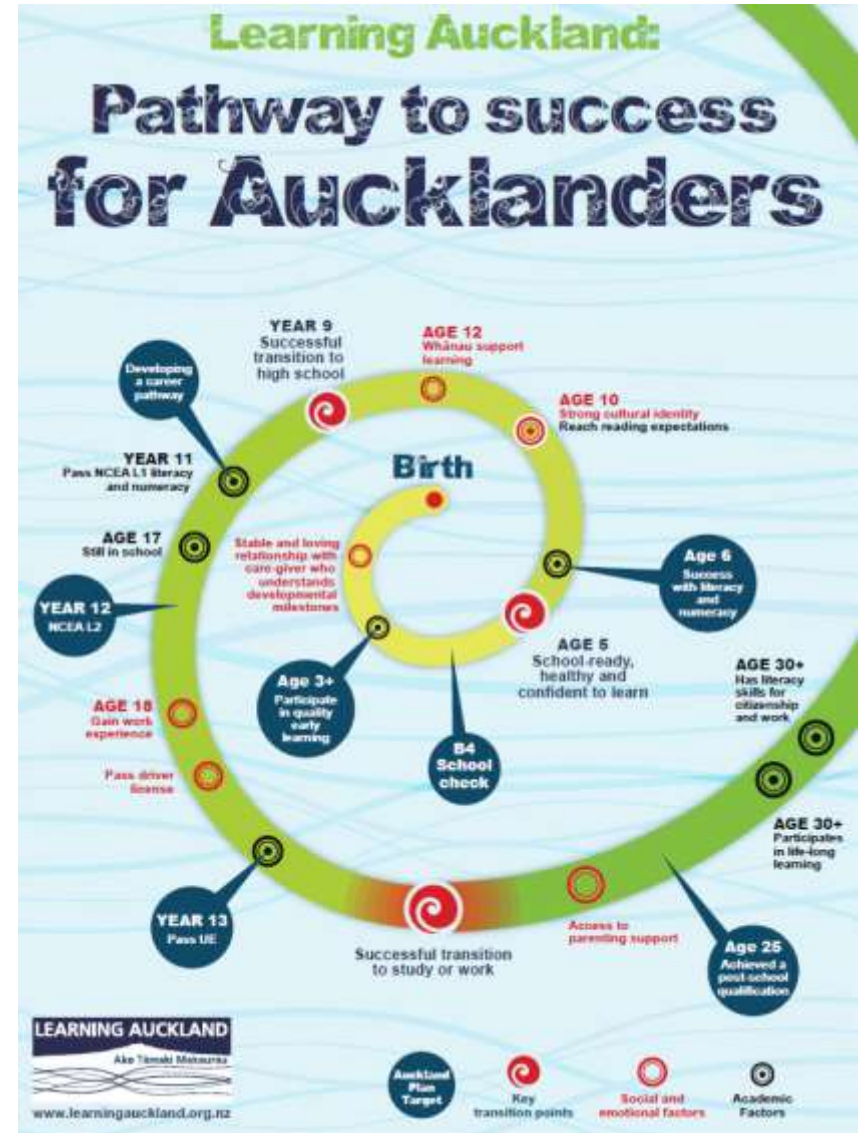
Aspiration

- All Aucklanders have the literacy, language and numeracy skills to thrive
- Every Aucklander has access to quality learning when and how they need it





- ✓ Inaugural Leadership Table
- ✓ A vision & principles – the Accord
- ✓ Set of measures



Strive Together *Emerging*

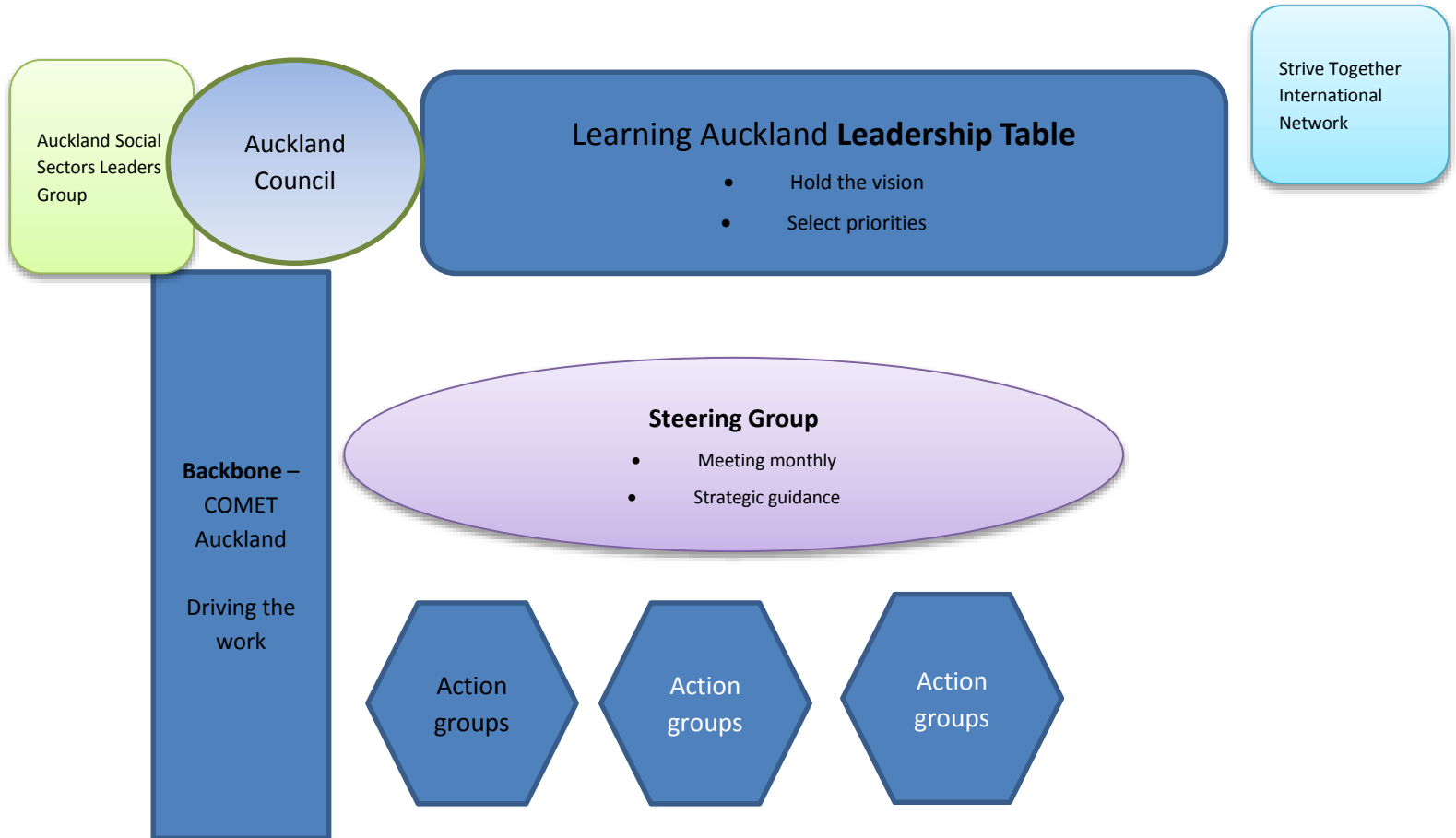
- ✓ X - sector partnership with geographic scope
- ✓ Leadership Table with accountability structure
- ✓ Community level outcomes
- ✓ Anchor entity/backbone

Continuous improvement methodology

Community messages and engagement

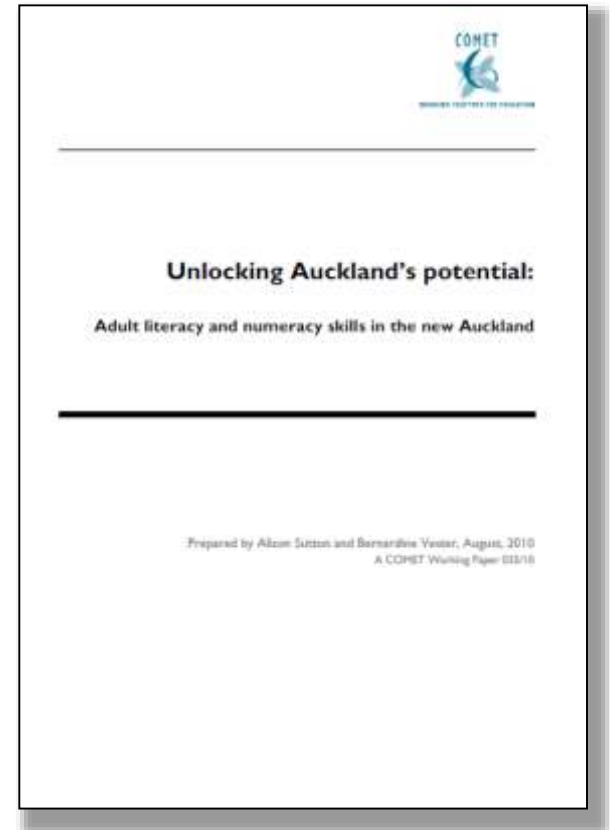
Funding

Learning Auckland accountability structure

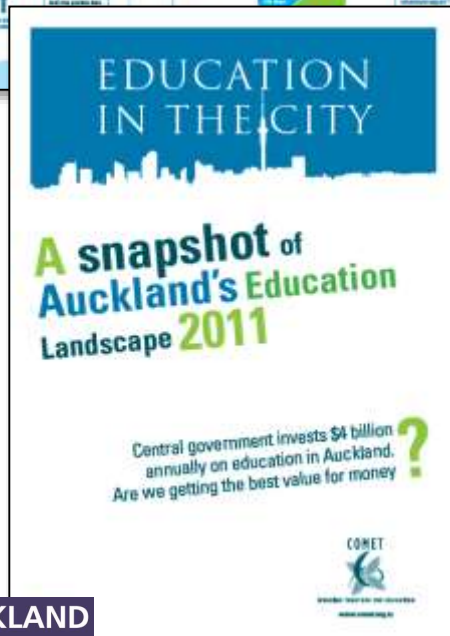
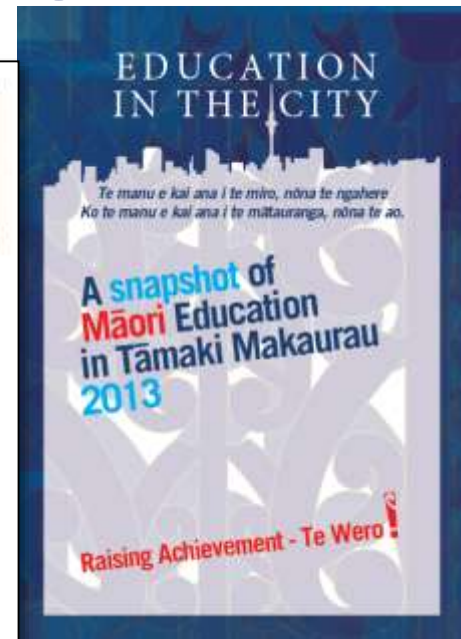
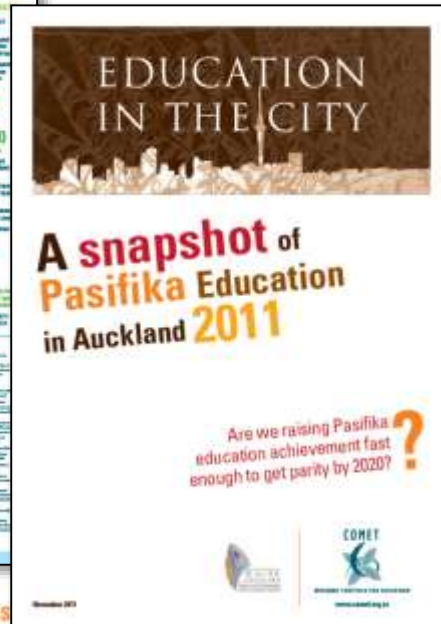
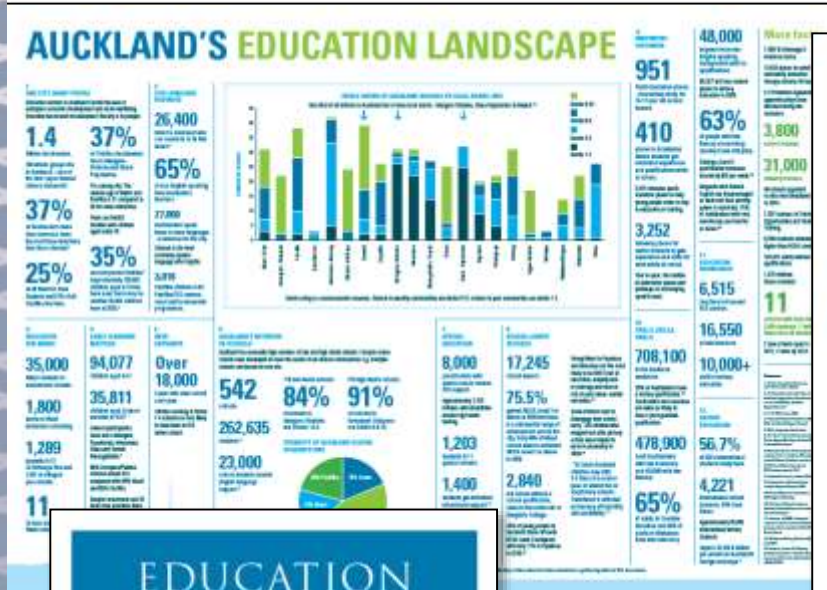


Data - Literacy underpins it all

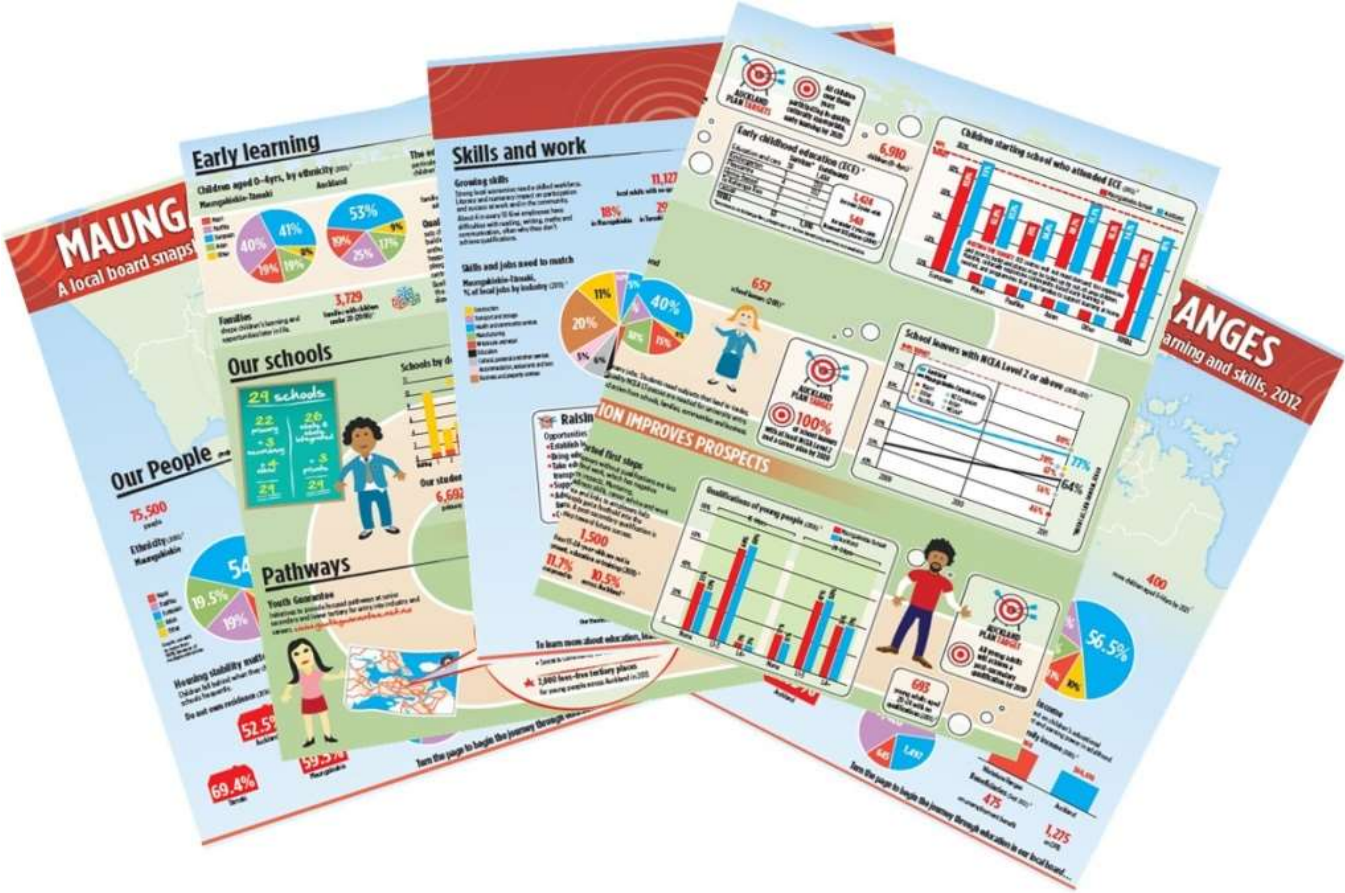
- 410, 000 Aucklanders with low literacy
- Report had an impact on education & skills targets in the Auckland plan



Population Snapshots



Education data for 21 local boards



WHAT IS LEARNING AUCKLAND?

EDUCATION SUCCESS UNDERPINS OUR CITY'S PROSPERITY

If Auckland is to thrive we need an effective education and skills system.

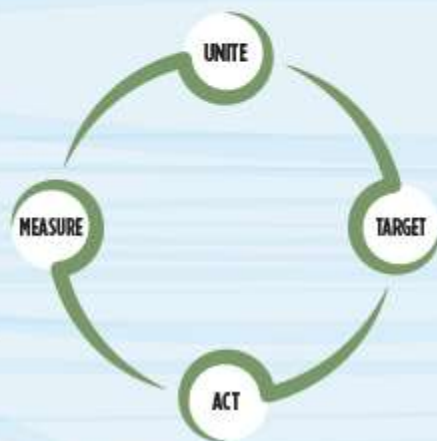
We are not there yet.

Achieving greater success for our young people is going to take efforts from all of us. COMET Auckland has been working with educators and community and business leaders to create Learning Auckland, a 'cradle to career' approach to education success, using proven collective impact methodology.

Collective Impact brings participants together around common goals and a set of agreed milestones for success.

Action groups focus on specific parts of the education and skills system. Everyone shares data, tracks progress and shares success stories so we understand what works and can bring initiatives to scale.

Learning Auckland has joined a network of 80 cities in the USA, Canada and Australia taking a 'cradle to career' approach to education and skills success.



EASY WAYS TO SUPPORT LEARNING AUCKLAND

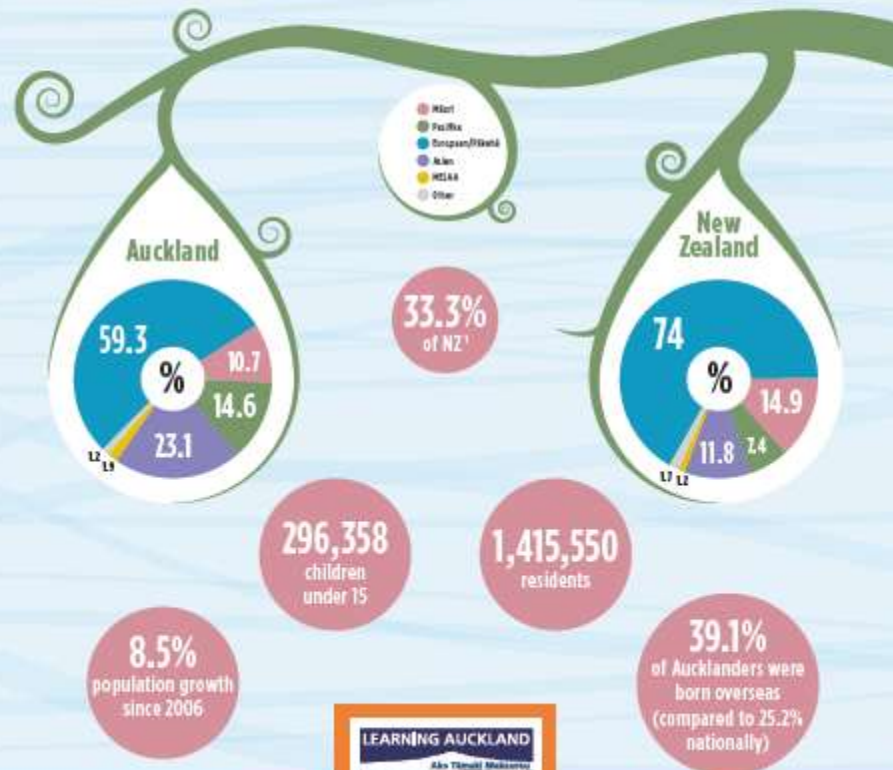
LEARNING AUCKLAND NEEDS EDUCATORS, BUSINESS, COMMUNITY AND FAMILIES TO WORK TOGETHER TO SPOTLIGHT THE PARTS IN THE CRADLE TO CAREER SYSTEM THAT DON'T WORK AND SCALE UP PROGRAMMES THAT DO

- Use this data to inform discussions and action in your part of the cradle to career system.
- Sign the Learning Auckland Accord today and encourage your networks to sign up too.
- Contribute funding and expertise towards coordination, data analysis or actions.
- Join one of the Action Groups that will focus on particular parts of the system.



LEARNING AUCKLAND DATA UPDATE 2013-2014

AUCKLAND'S PEOPLE¹



Next Steps

- Leadership Table to work with data & set priorities
- Action groups
- Resources to make it happen
- Make data more available and visible
- Continuous improvement framework

Want to get involved?

- Use the data
- Watch out for an action group
- 100 conversations in 100 days
- Contribute \$\$ & expertise to coordination, data analysis and action
- Give feedback on the pressure points & opportunities